

SECTION 7

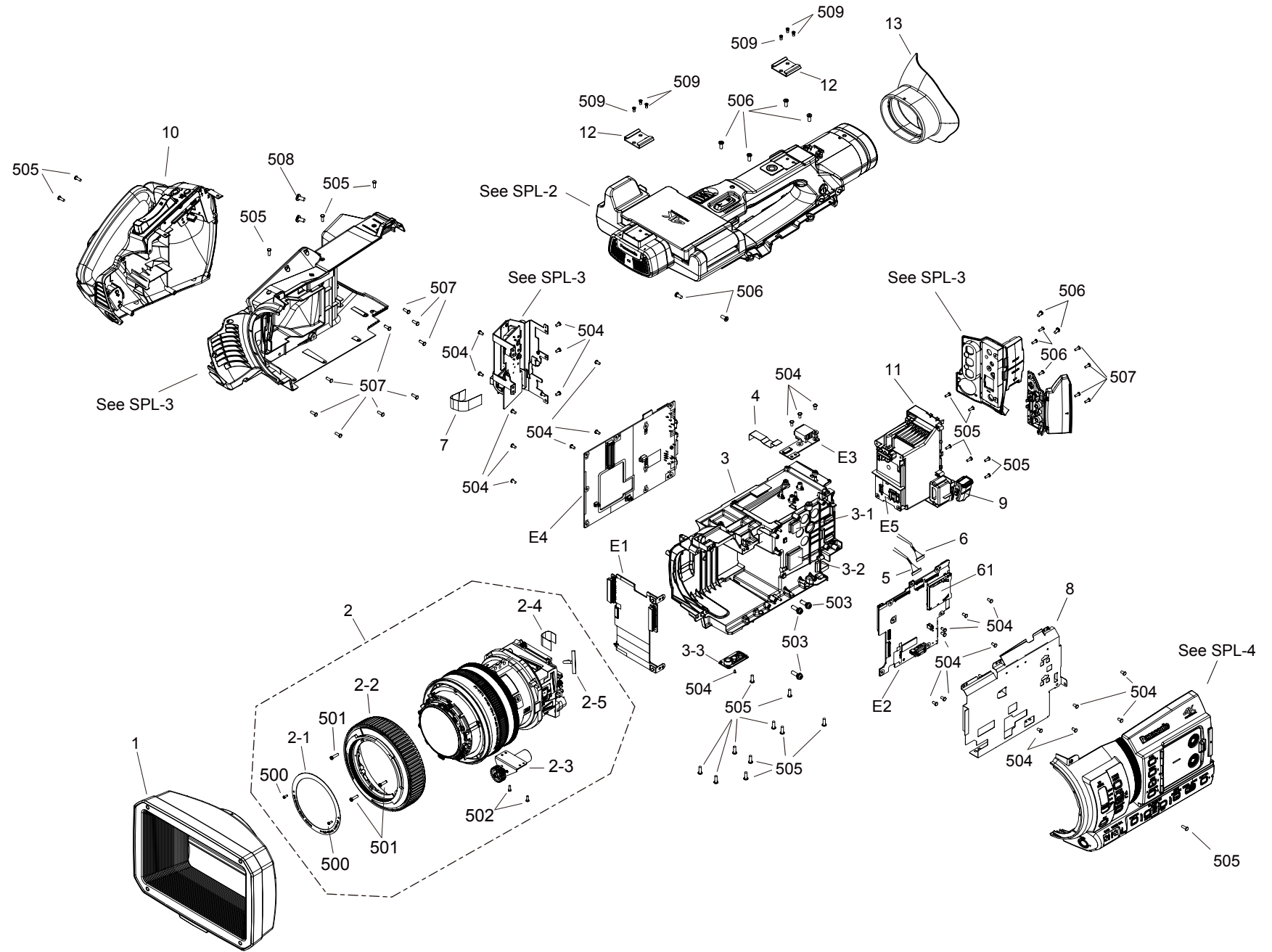
EXPLODED VIEWS & REPLACEMENT PARTS LIST

Model No. : **AG-CX350/P/PJ/EJ/EN/ED/AN/PX,**
AG-CX200MC,AJ-UPX360MC

Note:

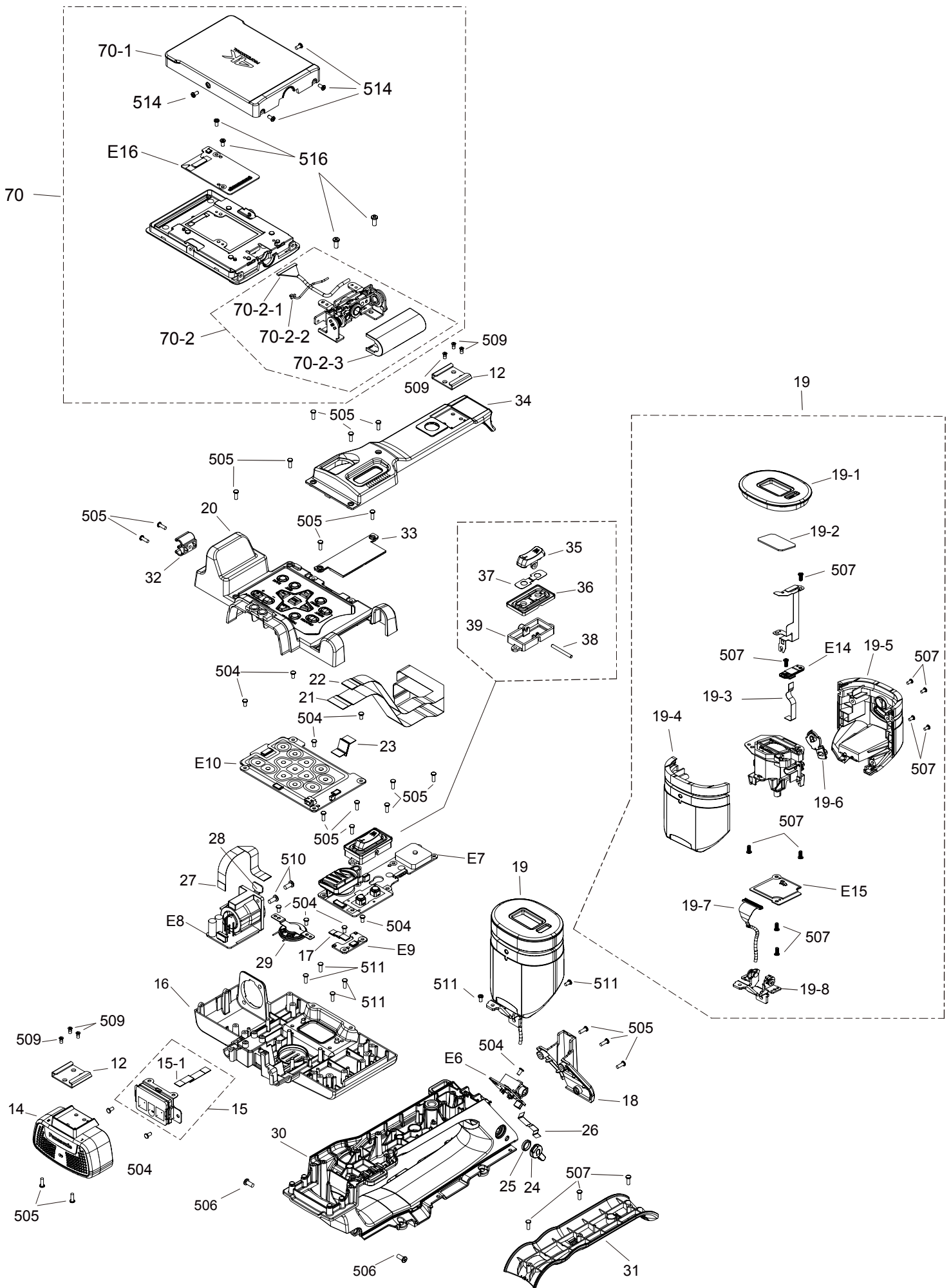
1. *Be sure to make your orders of replacement parts according to this list.
2. Unless otherwise specified, all resistors are in OHMS, K=1,000 OHMS, all capacitors are in MICROFARADS (μ F) P= $\mu\mu$ F.
3. The P.C.Board unit marked with "■" shown below the main assembled parts.
4. The parts marked with $\text{\textcircled{E}}$ on the exploded view show the electric parts.
5. IMPORTANT SAFETY NOTICE
Components identified with the mark \triangle have the special characteristics for safety When replacing any of these components, use only the same type.
6. The marking (RTL) indicates the retention time is limited for this item.
After the discontinuation of this assembly in production, it will no longer be available.
7. "M" in Remark column indicates needed in the periodical maintenance.

MAIN FRAME PARTS ASSEMBLY

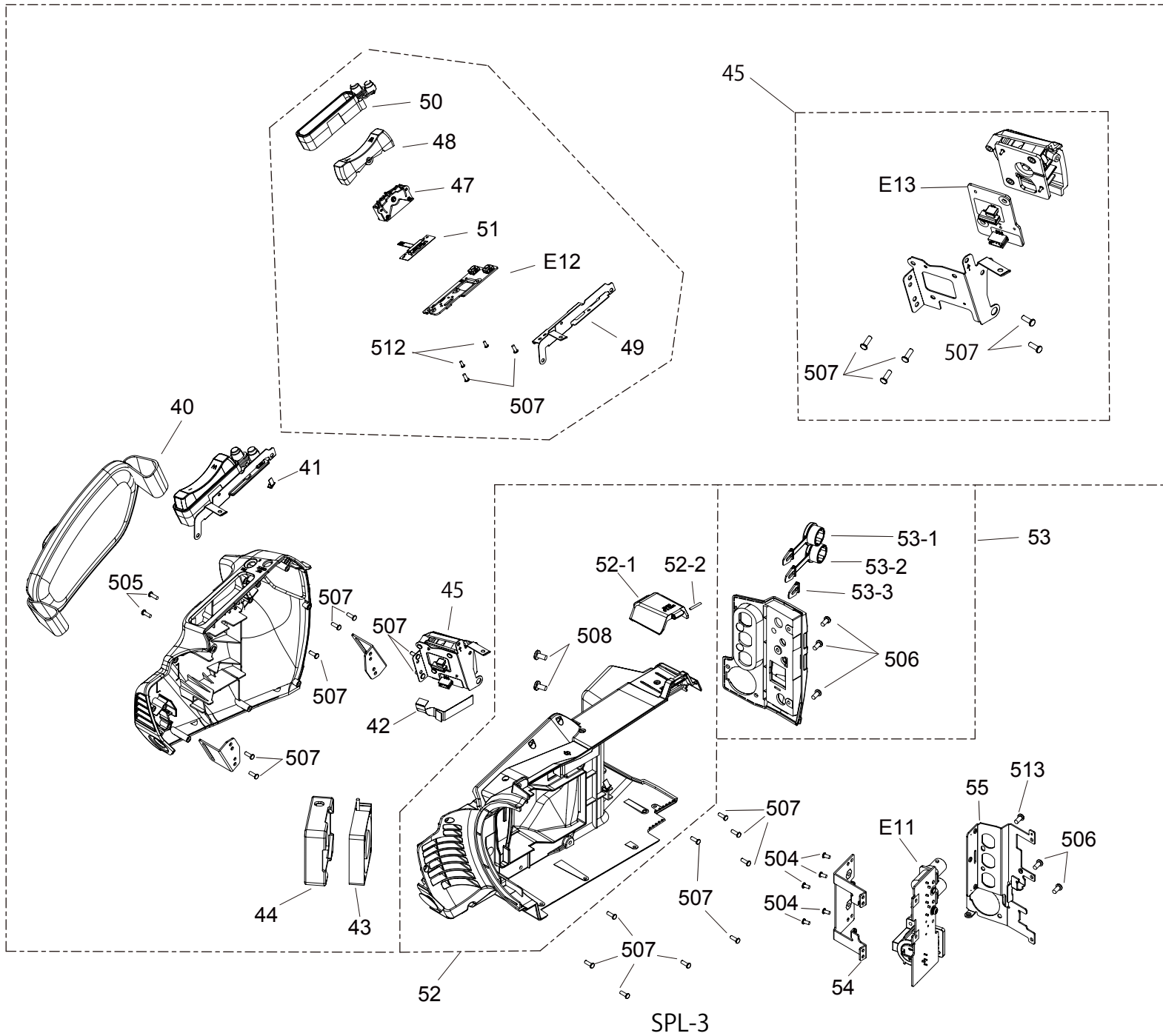


SPL-1

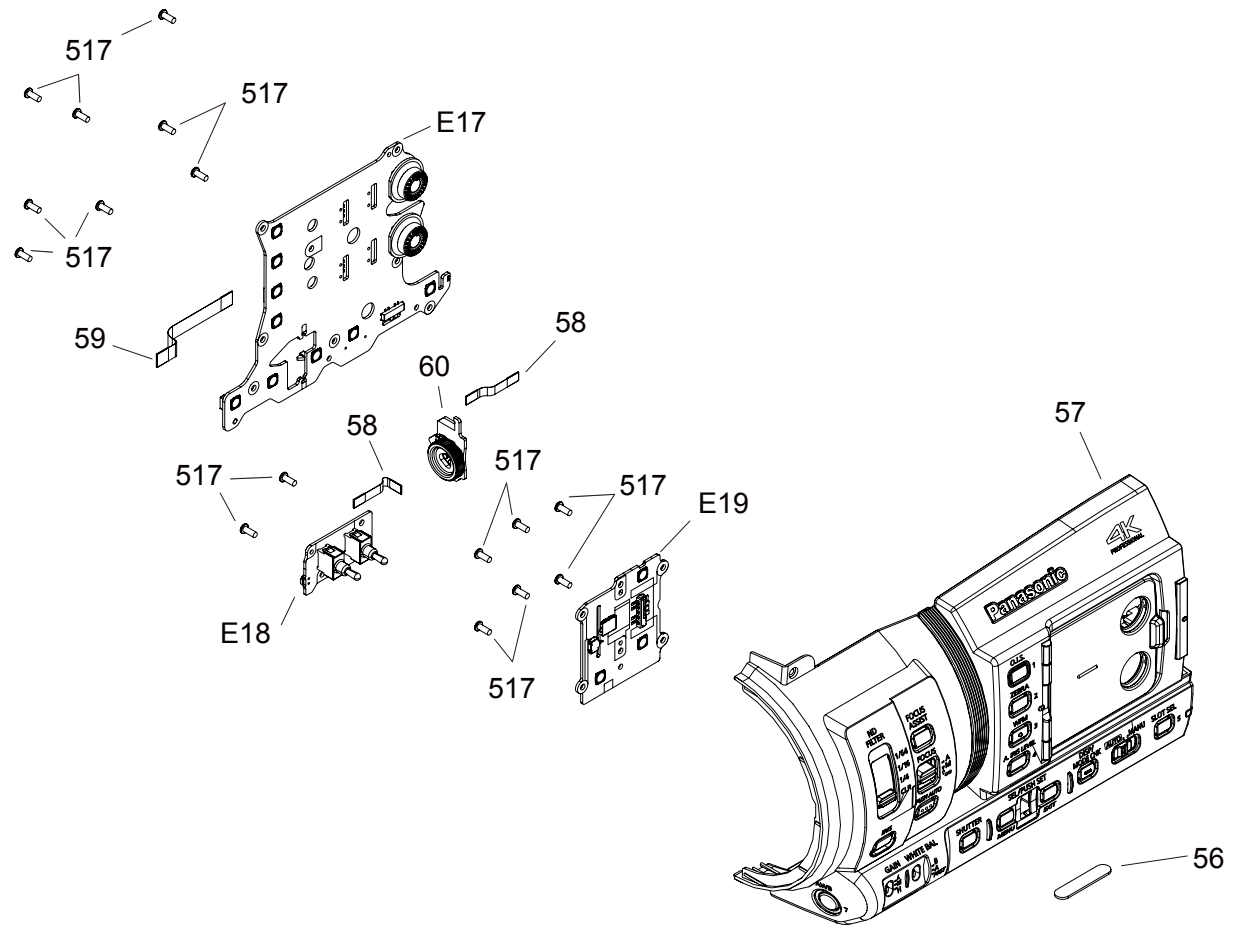
Handle Assembly



Side L Assembly



Side R Assembly



CASING PARTS ASSEMBLY LIST

| Ref. No. | Part No. | Part Name & Description | Pcs | Remarks |
|----------|--------------|---------------------------------------|-----|-----------------------|
| 1 | 6YP4AGCX350Z | LENS HOOD UNIT | 1 | |
| 2 | LOU3Z242K4Z | CAMERA LENS UNIT | 1 | |
| 2-1 | DVGT1184Z | LENS MEIBAN | 1 | |
| 2-2 | MDE1Z242ZE | FOCUS RING UNIT | 1 | |
| 2-3 | L6BAYYYD0002 | DC MOTOR | 1 | |
| 2-4 | DVJE1040Z | FFC | 1 | |
| 2-5 | DVWV1007Z | SENSOR-MAIN WIRE UNIT | 1 | |
| 3 | 1YM1AGCX350Z | MAIN FRAME UNIT | 1 | |
| 3-1 | VGQ9611 | COOLING SHEET 10X10 | 1 | |
| 3-2 | VMT1901 | COOLING SHEET 17 X 17 | 1 | |
| 3-3 | VGQ1A16 | TRIPOD PIECE | 1 | |
| 4 | DVJE1041Z | USB IF-POWER FFC (45MM 16PIN) | 1 | USB IF-POWER |
| 5 | DVWV1011Z | POWER-MAIN WIRE UNIT | 1 | POWER-MAIN |
| 6 | DVWV1010Z | JACK-MAIN WIRE UNIT | 1 | JACK-MAIN |
| 7 | DVJE1039Z | JACK-POWER FFC(30MM 16PIN) | 1 | |
| 8 | DVMC1189Z | MAIN SHIELD | 1 | |
| 9 | DVKV1053Z | HDMI CAP | 1 | |
| 10 | 5YP1AGCX350Z | GRIP CASE UNIT | 1 | |
| 11 | 1YP2AGCX350Z | BATTERY CASE UNIT | 1 | |
| 12 | VMP8492-1 | SHOE ANGLE | 1 | |
| 13 | SYA0048 | EYE CUP UNIT | 1 | |
| 14 | 8YP1AGCX350Z | MIC CASE UNIT | 1 | |
| 15 | 2YE2AGCX350Z | INT MIC UNIT | 1 | |
| 15-1 | DVJE1031Z | INT MIC-HANDLE OP FFC(40MM 10PIN) | 1 | INT MIC-HANDLE OP |
| 16 | DVMJ1026Z | LCD OP BASE | 1 | |
| 17 | DVJE1032Z | LCD POS-HANDLE OP FFC(30MM 8PIN) | 1 | LCD POS-HANDLE OP |
| 18 | DVKX1003Z | HANDLE COVER BACK | 1 | |
| 19 | 5YM2AGCX350Z | EVF UNIT | 1 | |
| 19-1 | 1YF1UX180Z | EVF PIECE UNIT | 1 | |
| 19-2 | DVGQ1020Z | EVF PANEL | 1 | |
| 19-3 | STJ0134 | EYE_SENSOR_FFC | 1 | |
| 19-4 | DVKE1084Z | EVF CASE TOP | 1 | |
| 19-5 | DVKE1085Z | EVF CASE BOTTOM | 1 | |
| 19-6 | SML0080 | EVF ADJUST LEVER | 1 | |
| 19-7 | DVWV1009Z | EVF-MAIN WIRE UNIT | 1 | |
| 19-8 | VXD0623 | EVF HINGE UNIT | 1 | |
| 20 | DVKV1058Z | LCD OP COVER | 1 | |
| 21 | DVJE1034Z | HANDLE OP-POWER FFC(190MM 30PIN) | 1 | HANDLE OP-POWER |
| 22 | DVJE1035Z | HANDLE OP-POWER FFC(170MM 20PIN) | 1 | HANDLE OP-POWER |
| 23 | DVJE1033Z | HANDLE OP-HANDLE ZOOM FFC(40MM 16PIN) | 1 | HANDLE OP-HANDLE ZOOM |
| 24 | DVKV1057Z | HEAD PHONE CAP | 1 | |
| 25 | VHN0382 | NUT | 1 | |
| 26 | DVJE1038Z | HP-POWER FFC(115MM 6PIN) | 1 | HP-POWER |
| 27 | DVJE1030Z | XLR-HANDLE OP FFC(70MM 14PIN) | 1 | XLR-HANDLE OP |
| 28 | K1AB103B0016 | CONNECTOR | 1 | |
| 29 | LOAA02A00127 | SPEAKER UNIT | 1 | |
| 30 | DVMJ1025Z | HANDLE | 1 | |
| 31 | DVKX1004Z | HANDLE GRIP | 1 | |
| 32 | VJF1256 | CABLE CLAMPER | 1 | |
| 33 | DVKV1058Z | LCD OP COVER | 1 | |
| 34 | 1KH1AGCX350Z | HANDLE COVER TOP UNIT | 1 | |
| 35 | VGU9208 | HANDLE T/W BUTTON | 1 | |
| 36 | VMG2116 | SUB ZOOM BUTTON RUBBER | 1 | |
| 37 | SGQ0338 | SUB ZOOM SHEET | 1 | |
| 38 | VMS8226 | SUB ZOOM SHAFT | 1 | |
| 39 | DVGE1435Z | HANDLE ZOOM HOLDER | 1 | |
| | | | | |
| | | | | |
| | | | | |
| | | | | |
| | | | | |

ELECTRICAL REPLACEMENT PARTS LIST

| Ref. No. | Part No. | Part Name & Description | Pcs | Remarks |
|----------|---------------|--------------------------------------|-----|---------|
| ■ E1 | 1PB1DVLB1361Z | LENS P. C. BOARD | 1 | |
| ■ E2 | 1PB1DVLB1357Z | MAIN P. C. BOARD | 1 | |
| IC900 | 1VJ1DVLB1357Z | ROM WRITE-IN PROCESSING (2ND REFLOW) | 1 | |
| JK2200 | K1FY124E0005 | CONNECTOR | 1 | |
| ■ E3 | 1PB1DVLB1358Z | USB IF P. C. BOARD | 1 | |
| JK900 | K1FA104B0049 | USB HOST CONNECTOR | 1 | |
| ■ E4 | 1PB1DVLB1359Z | POWER P. C. BOARD | 1 | |
| △ PA600 | K5H502YA0056 | FUSE | 1 | |
| △ PA601 | K5H8012A0008 | FUSE | 1 | |
| △ PA901 | K5H8012A0008 | FUSE | 1 | |
| JK301 | K2HC106B0010 | JACK | 1 | |
| JK400 | K2LC108B0075 | JACK | 1 | |
| JK600 | K2ED2B000009 | DC IN CONNECTOR | 1 | |
| ■ E5 | 1PB1DVLB1366Z | LCD POS P. C. BOARD | 1 | |
| JK700 | K2HC103B0225 | JACK | 1 | |
| ■ E6 | 1PB1DVLB1370Z | HP P. C. BOARD | 1 | |
| JK700 | K2HC103B0225 | JACK | 1 | |
| ■ E7 | 1PB1DVLB1365Z | HANDLE ZOOM P. C. BOARD | 1 | |
| JK700 | K2HC103B0225 | JACK | 1 | |
| ■ E8 | 1PB1DVLB1364Z | XLR P. C. BOARD | 1 | |
| △ PA350 | K5H501YA0055 | FUSE | 1 | |
| JK350 | K1AB103B0016 | CONNECTOR | 1 | |
| ■ E9 | 1PB1DVLB1363Z | INT MIC P. C. BOARD | 1 | |
| ■ E10 | 1PB1DVLB1368Z | GRIP ZOOM P. C. BOARD | 1 | |
| ■ E11 | 1PB1DVLB1371Z | JACK P. C. BOARD | 1 | |
| △ PA830 | K5H501YA0055 | FUSE | 1 | |
| JK820 | K1QYY2YB0014 | VIDEO OUT/GL IN CONNECTOR | 1 | |
| JK830 | K1AB103B0016 | CONNECTOR | 1 | |
| ■ E12 | 1PB1DVLB1362Z | HANDLE OP P. C. BOARD | 1 | |
| ■ E13 | 1PB1DVLB1367Z | POWER SW P. C. BOARD | 1 | |
| ■ E14 | 1PB1DVLB1360Z | BATT IF P. C. BOARD | 1 | |
| △ PA2000 | K5H632YA0056 | FUSE | 1 | |
| ■ E15 | 1PB1DVLB1372Z | EYE_SENSOR P. C. BOARD | 1 | |
| ■ E16 | 1PB1DVLB1377Z | MONITOR P. C. BOARD | 1 | |
| ■ E17 | 3YE1AGCX350Z | OP SW PB AU | 1 | |
| △ ETC200 | ML-614S/ZTN | BATTERY | 1 | |
| ■ E18 | 1PB1DVLB1376Z | TOGGLE SW P. C. BOARD | 1 | |
| ■ E19 | 1PB1DVLB1374Z | CAM OP P. C. BOARD | 1 | |

Components identified with the mark ■ have the special characteristics for safety.
When replacing any of these components, use only the same type.