

STAGEPARTNER
STAGETECHNOLOGY

Foto: © Dietmar Lipkovich

we advance

Free**STAGE**

V1.4

TRAILERSTAGE

8x6

Cost and work minimisation

- Minimum logistics costs: 1 tractor (3,5t pulling power)
- Extremely short setup time: 25 minutes
- Lowest personnel requirements: 1 person

Product Uses

The all-rounder among trailer stages for your stage shows.
Ideal for events like rallies, city festivals, concerts, road shows.

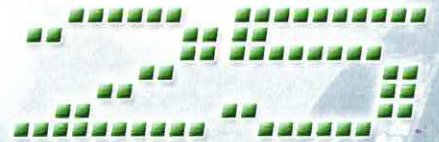
Mature Technology

- Reduced amount of force required due to innovative mechanics
- No tedious plug and screw connections
- High roof loads
- Extensive accessories available
- Wind and weatherproof
- Closed vehicle during transport and storage (vandalism)
- Integrated, covered PA wings

Certified Quality

- Constructed according to DIN 4112 and 18800
- Tested for civil use (inspection logbook)
- CE marking (EU certification)
- Operating load test
- Wind safe up to 8 Beaufort

advantages



twentyfive minutes

The chassis.

Space frame made of steel, inertia braking system, standard is central tandem axle-trailer, air brakes can be retrofitted on request, designed as a semitrailer or also available with turnable.

The floor.

Rigid modular bar joist construction as a substructure covered with weatherproof 15 mm wood composite boards and supported by pneumatic spring system.

The roof.

Aluminium-steel GRP composite roof (no water bags), ceiling system is opened manually, supported by pneumatic spring

system and raised by a 230V electric lifting system.

The side walls.

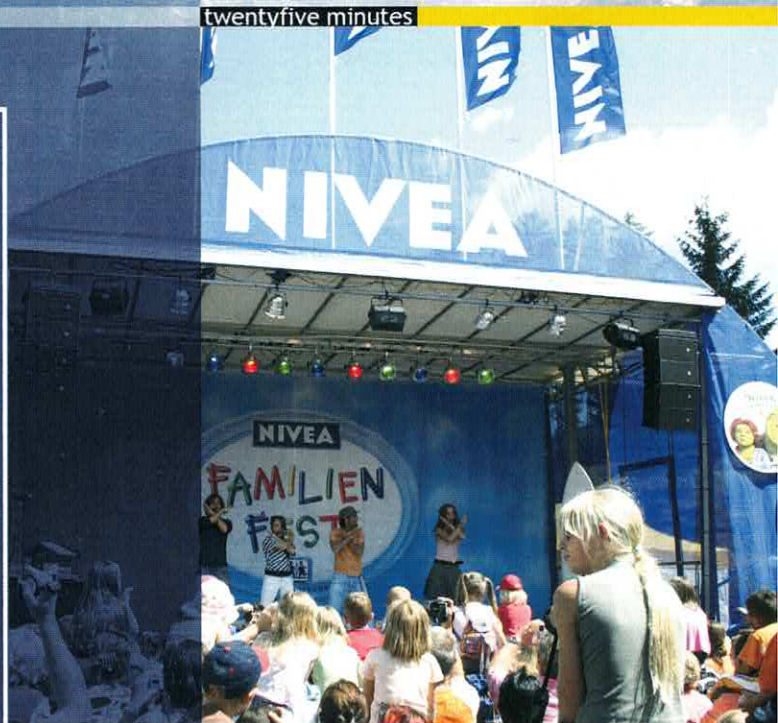
Gauze or tarpaulins (fire protection class B1). With colour or printing on request.

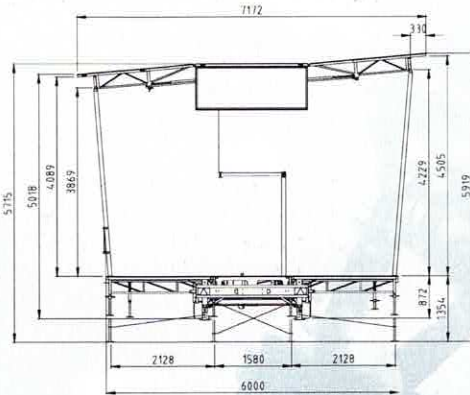
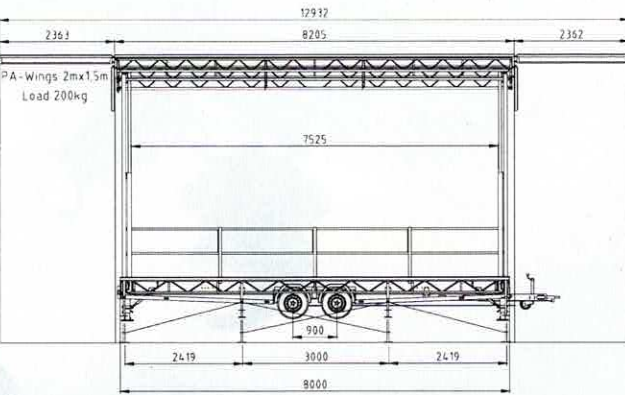
PA wings.

PA wings form a unit with the stage and are part of the setup mechanism of the stage. This means that there are no extra supports, bases or roofing for PA wings; point load centred 200kg/PA wing.

The equipment.

Guard rails, aluminium stair that can be levelled, 3-sides of gauze and floor overhang are incl. in system.





Technical Data

Stage overall:	Length (incl. tow bar):	9.200 mm
	Width	2.430 mm
	Height	3.183 mm
Floor	Own weight	3.420 kg
	Cargo	80 kg
	Total weight	3.500 kg
Roof	Width	8.000 mm
	Depth	6.000 mm
	Height	0,9-1,35 m
	Capacity	350 kg/m ²
	Clearance height	up to 4.500 mm
PA Wings	Uniformly distributed load	320 kg
	Centre point load	160 kg
	Total capacity	1.280 kg
Side wall	Truss center point load	200 kg
	Windresistance with mesh	as per DIN 4112



Technical data is subject to change without notice! We assume no liabilities for misprints!

accessories



Advertising banner for back wall, roof, PA,...



Adjustable height tow bar with lug or ball hitch coupling



Aluminium ramp, high load bearing capacity, low weight

features



Covered PA wings integrated for loudspeakers



Easy setup of the stage with 230V electrics



Aluminium stair (self-levelling) with high load bearing capacity, attachable all round



Gauze (B1) in different colours, printable



Steady legs for easy levelling of the stage floor



Cord tracks, gauze or tarpaulin can be drawn in quickly



Guard rail (3-sides) as protection against falling



Braces secure the roof

Other STAGEPARTNER products that will convince you

- FreeSTAND telescopic grandstands
- Stage lifts
- Special event facilities
- Stage accessories

STAGEPARTNER
Penz Bühnentechnologie GmbH

Bundesstraße 66, A-8740 Zeltweg
Phone: +43 / 3577 / 758 240
Fax: +43 / 3577 / 758 532

office@stagepartner.at
www.stagepartner.at

contact STAGEPARTNER

STAGEPARTNER is an innovative and aspiring company that has specialised in the development and sale of trailer stages as well as telescopic grandstands, special event facilities and theatre interior. As one of the leading manufacturers, we have not only the necessary know-how, but we can also reflect back on years of experience in the stage technology sector.

We offer complete technical solutions with forward-looking equipment in a high-quality design. In addition, our systems are convincing due to their easy yet still absolutely safe handling.

Your local STAGEPARTNER: